

SAFETY INFORMATION FOR HIRER

SOUP KETTLE

GENERAL SAFETY

For information and advice on the suitability and safety of this type of equipment please contact Jaspers Hire.

This equipment should only be used by a competent and responsible adult who has read and understood these instructions.

Keep all children, animals and bystanders away from the work area.

Ensure that the equipment is sitting level and the floor of the work area is free from trip hazards and nonslip.

Never use the equipment if you are ill, tired or under the influence of alcohol or drugs.

Never operate electrical switches with wet hands. Always switch off and unplug the equipment from the power supply before moving or cleaning.

Check the equipment before use and report any damage to Jaspers Hire.

REMOVE ALL PACKAGING BEFORE USE.

There is a risk of injury if you do not follow the instructions printed in this guide.

ELECTRICAL SAFETY

The equipment is designed to plug directly into a standard 240volt, 13amp socket. Make sure the equipment and power socket are switched off before plugging into the power supply.

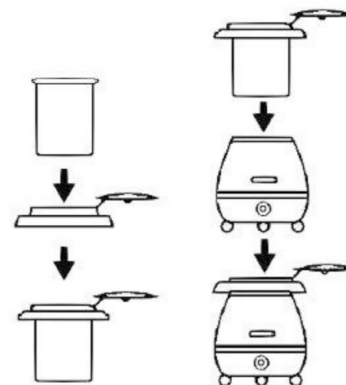
If the equipment fails to operate or the power cable or plug becomes damaged, contact Jaspers Hire. Do not try to repair it yourself.

Keep the power cable out of harm's way. Extension leads should be fully unwound, never run them through water, over sharp objects or where they may be a trip hazard.

Use a suitable RCD (Residual Current Operated Device) to reduce the risk of electric shock.

IMPORTANT: THIS EQUIPMENT REQUIRES A CONTINUOUS SUPPLY OF 3AMPS TO OPERATE CORRECTLY.

IF THIS EQUIPMENT IS NOT REACHING TEMPERATURE YOU MAY NOT HAVE ENOUGH AMPS.



OPERATING INSTRUCTIONS

Operating

NOTE: NEVER place empty inner warming pot into the warmer when turned on.

1. Connect the appliance to the main power supply.
2. Pour water into base of Soup Warmer no higher than the maximum water line marked on the inside of the base.

Make sure to check the water level of the warmer every 3 hours or so. Turn off unit, let cool and refill as needed. Do not operate the Soup Warmer without at least 2.5 cups of water in the base.

3. Place soup pot into plastic ring provided.
4. Slowly lower pot into base using ring to secure.
5. Soup Warmer should be placed on a stable, horizontal surface.

Temperature should be set between 1 and 8. It is recommended that the temperature be set at the lowest acceptable temperature to keep food at a constant temperature.

6. Lid must be in place when not in use.
7. Turn dial to zero and unplug the unit when not in use.
8. Avoid reaching over the unit when it is operating.
9. Use clean water to fill water reservoir before each use.
10. Never move or carry Soup Warmer when it is hot and/or plugged in.
11. Do not use any parts in microwave or on any cooking/heated surface.
12. Unplug the warmer when not in use.

CLEANING

- ALWAYS allow the unit to cool before cleaning.
- ALWAYS unplug the Soup Warmer before cleaning.
- DO NOT hose down, immerse or pressure wash the Soup Warmer.
- NEVER use a scrubber pad, steel wool or abrasive material to clean the Soup Warmer.

For best results clean according to the cleaning schedule below:

Soup Warmer Inner Warming Pot

After each use - Wash thoroughly removing all stuck-on food debris.

Body

Daily - Wipe down the unit with a damp cloth. Unplug and after the unit has cooled, empty water from the warmer and wipe dry.

Clean using warm water (max. 65 °C) with a little mild, perfume-free detergent. Never use cleaning agents that scour. Use a soft cloth. And dry thoroughly.

JASPERS
EVENT HIRE